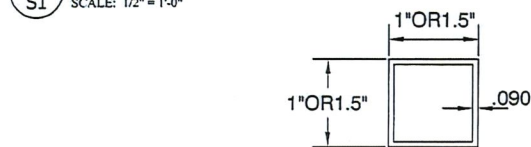
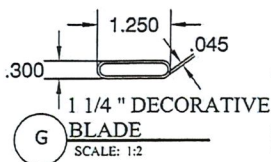


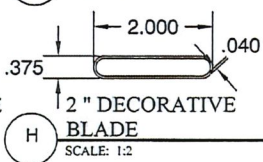
1 TYPICAL ELEVATION
SCALE: 1/2" = 1'-0"



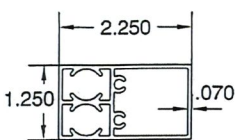
Q SQUARE TUBE
SCALE: NTS



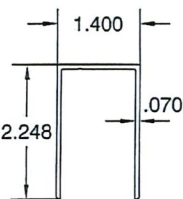
G 1 1/4" DECORATIVE BLADE
SCALE: 1:2



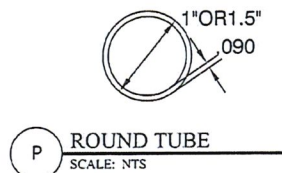
H 2" DECORATIVE BLADE
SCALE: 1:2



A "OVAL BLADE SIDE RAIL
SCALE: 1:2



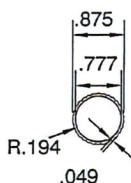
B TOP / BOTTOM RAIL
SCALE: 1:2



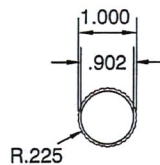
P ROUND TUBE
SCALE: NTS



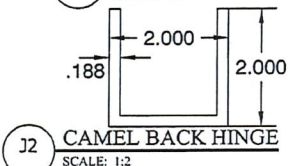
O 1/4" ELCO ULTRACON
SCALE: NTS



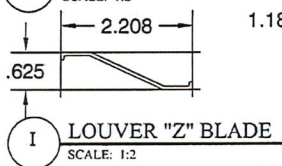
K 7/8" SERRATED TUBE
SCALE: 1:2



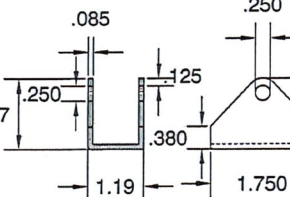
L 1" SERRATED TUBE
SCALE: 1:2



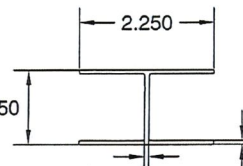
J2 CAMEL BACK HINGE
SCALE: 1:2



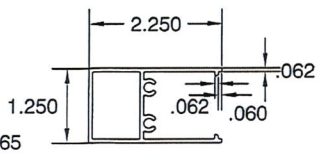
I LOUVER "Z" BLADE
SCALE: 1:2



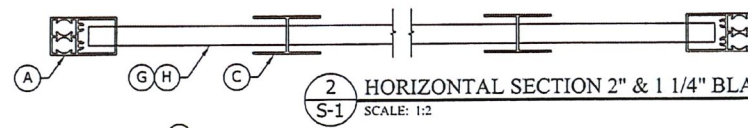
J1 CAMEL BACK HINGE
SCALE: 1:2



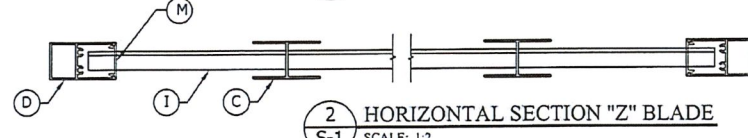
C CENTER MULLION
SCALE: 1:2



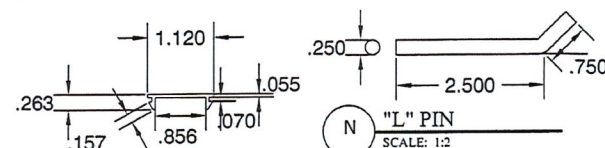
D "Z" BLADE SIDE RAIL
SCALE: 1:2



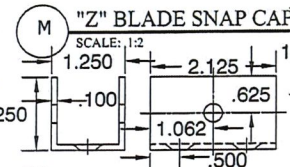
2 HORIZONTAL SECTION 2" & 1 1/4" BLADE
SCALE: 1:2



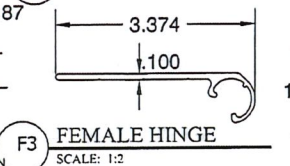
2 HORIZONTAL SECTION "Z" BLADE
SCALE: 1:2



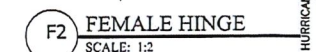
N "L" PIN
SCALE: 1:2



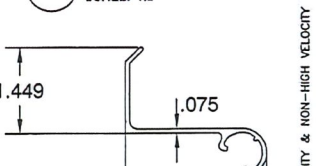
M "Z" BLADE SNAP CAP
SCALE: 1:2



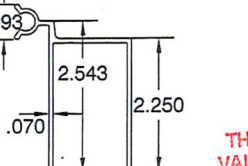
J3 ALT. MOUNTING CH.
SCALE: 1:2



F2 FEMALE HINGE
SCALE: 1:2



F1 FEMALE HINGE
SCALE: 1:2



E CHANNEL W/ MALE HINGE
SCALE: 1:2

THIS IS NOT A MASTER DRAWING.
VALID ONLY FOR ONE TIME PERMIT

John H. Hampmann Jr., PE
FL License #: 47516
DATE: 10/29/15

CA #6752
WWW.MEASIGNERS.COM
MEA
ENGINEERS, INC.
2352 Appleton Circle
Springdale, Florida 34240
(941) 922-3854

DESCRIPTION
XX/XX/XX - RESERVED.
REV
1

EASTERN METAL SUPPLY
3130 S.W. 10TH AVENUE
LAKE WORTH, FL 33461

Project Name:
2014 FBC (HIGH VELOCITY & NON-HIGH VELOCITY HURRICANE ZONE)

Drawn: JK
Project #: 15-0901A
Scale: NTS
Date: 9/1/15
Sheet No:

DECORATIVE
BAHAMA SHUTTER

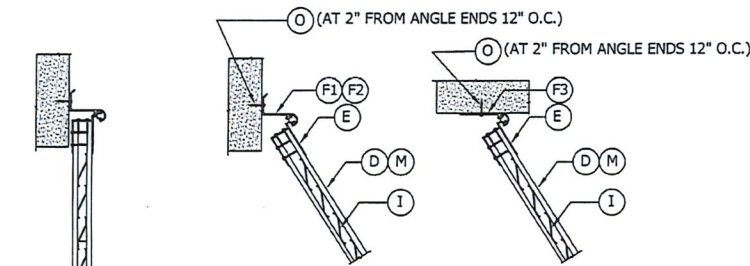
S-1

GENERAL NOTES

- DESIGN IS IN ACCORDANCE WITH THE REQUIREMENTS OF THE FIFTH EDITION (2014) FLORIDA BUILDING CODE FOR USE WITHIN THE NON-HIGH VELOCITY HURRICANE ZONE (HVHZ). ITS USE IS LIMITED TO THE ALLOWABLE DESIGN PRESSURE NOTED IN THIS DOCUMENT AND IS NOT TO BE USED AS AN APPROVED HURRICANE PROTECTION DEVICE.
- DESIGN PRESSURES FOR USE WITH THIS ENGINEERING SHALL BE AS NOTED:
DESIGN PRESSURES: +65 PSF / -65 PSF
- WARNING LABEL: THIS SHADE BAHAMA MUST BE PROVIDED WITH A WARNING LABEL, PERMANENTLY PLACED, STATING THE FOLLOWING: THIS PRODUCT IS NOT DESIGNED TO PROVIDE IMPACT RESISTANCE. IT IS NOT AN APPROVED HURRICANE PROTECTION DEVICE. IT SHOULD BE REMOVED DURING PERIODS OF HURRICANE WARNING.
- FASTENERS: ELCO ULTRACON 1/4" TO BE ATTACHED TO CONCRETE, MASONRY OR WOOD. FOR EDGE DISTANCES AND EMBEDMENT LENGTHS REFER TO ANCHOR SCHEDULE.

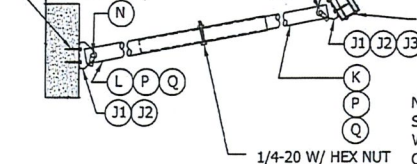
- THIS DESIGN IS GENERIC AND DOES NOT PROVIDE INFORMATION FOR A SPECIFIC SITE. IF SITE CONDITIONS DEVIATE FROM THE CONDITIONS DETAILED HEREIN, A SITE SPECIFIC DESIGN PREPARED BY THIS PROFESSIONAL ENGINEER OF RECORD SHALL BE REQUIRED.
- THE CONTRACTOR OR PERMIT HOLDER IS RESPONSIBLE FOR THE SELECTION, PURCHASE AND INSTALLATION OF THIS SYSTEM, INCLUDING VERIFYING THE ADEQUACY OF THE EXISTING STRUCTURE WHERE THE SYSTEM IS TO BE ATTACHED TO INSURE PROPER ANCHORAGE.
- THIS DOCUMENT SHALL BEAR THE DATE AND ORIGINAL EMBOSSED SEAL OF THE PROFESSIONAL ENGINEER OF RECORD WHO PREPARED IT.
- ENGINEER SEAL AFFIXED HERETO VALIDATES THE STRUCTURAL DESIGN AS SHOWN ONLY. USE OF THIS SPECIFICATION BY CONTRACTOR, et. al. INDEMNIFIES & SAVES HARMLESS THIS ENGINEER FOR ALL COSTS & DAMAGES INCLUDING LEGAL FEES & APPELLATE FEES RESULTING FROM DEVIATIONS FROM THIS PLAN.
- ANY MODIFICATIONS OR ADDITIONS TO THIS DOCUMENT WILL INVALIDATE ENGINEER'S CERTIFICATION. EXCEPT AS PROVIDED HEREIN, NO ADDITIONAL CERTIFICATIONS OR AFFIRMATIONS ARE INTENDED.
- ALL ALUMINUM SHALL BE 6063-T6 ALLOY & TEMPER.
- FASTENERS SHALL BE WEATHER RESISTANT AND INSTALLED PER MANUFACTURERS SPECIFICATIONS.

NOTE:
BLADES MAY
BE PLACED IN
EITHER
DIRECTION



2 ROWS #14X1 SMS AT 2"
FROM PANEL ENDS & 12" O.C.
OR WELDED CONNECTION

O (AT 2" FROM ANGLE
ENDS 12" O.C.)



2#14X1 SMS IN
SCREW BOSS (TYP)
OR WELDED
CONNECTION

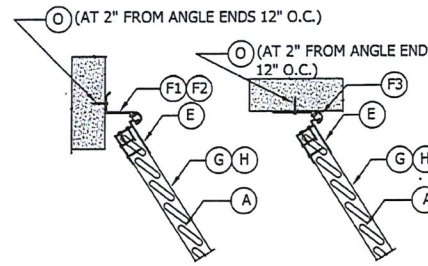
NOTE: RIVNUT WITH 1/4"-20X2" INTO
SIDE OF JAMB MAY BE SUBSTITUTED
WITH 18" MAX. WIDTH BAHAMA IN LIEU
OF "N" WITH "J1" OR "J2" OR "J3".

1/4-20 W/ HEX NUT

3 VERTICAL SECTION "Z" BLADE
SCALE: 1:2

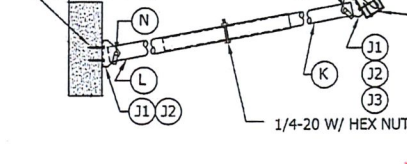
- NOTE:
- FIXED TUBES (P) AND (Q) ARE
INSTALLED ONTO (O)
 - ADJUSTABLE TUBES (K) (L) USE (I)
 - MAX. TUBE SPACING = 18" O.C.
 - MAX. TUBE LENGTH = 20" O.C.

NOTE:
BLADES MAY
BE PLACED IN
EITHER
DIRECTION



2 ROWS #14X1 SMS AT 2"
FROM PANEL ENDS & 12" O.C.
OR WELDED CONNECTION

O (AT 2" FROM ANGLE
ENDS 12" O.C.)



2#14X1 SMS IN SCREW BOSS (TYP)
OR WELDED CONNECTION

NOTE: RIVNUT WITH 1/4"-20X2" INTO
SIDE OF JAMB MAY BE SUBSTITUTED
WITH 18" MAX. WIDTH BAHAMA IN LIEU
OF "N" WITH "J1" OR "J2" OR "J3".

- NOTE:
- FIXED TUBES (P) AND (Q) ARE
INSTALLED ONTO (O)
 - ADJUSTABLE TUBES (K) (L) USE (I)
 - MAX. TUBE SPACING = 18" O.C.
 - MAX. TUBE LENGTH = 20" O.C.

ALLOWABLE PRESSURES:	
PD= +65 PSF, -65 PSF	CLOSED POSITION
NON IMPACT RESISTANT	

ANCHOR SCHEDULE		
MATERIAL	EMBED	E.D.
3000 PSI CONCRETE	1.75	2.5
1900 PSI MASONRY	1.5	2.5
WOOD	1.5	0.75

THIS IS NOT A MASTER DRAWING.
VALID ONLY FOR USE TIME PERMIT

John H. Kampmann Jr., PE
FL License #: 47516
DATE: 10/24/15

CA #6752
WWW.MEAENGINEERS.COM

MEA ENGINEERS, INC.
2352 Apolloa Circle
Beverly Hills, CA 90212
(911) 922-3852

DESCRIPTION
XX/XX/XX - RESERVED.

REV
1

Project Name
EASTERN METAL SUPPLY
3600 23RD AVENUE SOUTH
LAKE WORTH, FL 33461

Decorative
BAHAMA SHUTTER

Drawn: JK
Project # 15-0901A
Scale: NTS
Date: 9/1/15
Sheet No.: S-2

2014, FBC (HIGH VELOCITY & NON-HIGH VELOCITY HURRICANE ZONE)