

REVISIONS			
REV	DESCRIPTION	DATE	APPROVED
D	REVISED PER NEW CODE	01/30/2023	R.L.

NOTES:

1. THE PRODUCT SHOWN HEREIN IS DESIGNED AND MANUFACTURED TO COMPLY WITH REQUIREMENTS OF THE 2021 SOUTH CAROLINA BUILDING CODE, 2021 SOUTH CAROLINA RESIDENTIAL CODE, 2021 IBC AND 2021 IRC
2. THESE INSTALLATION INSTRUCTIONS ARE ONLY FOR THE STORM COVERING. FENESTRATION SYSTEMS MUST HAVE THEIR OWN SEPARATE APPROVAL.
3. STORM TRIM PLUS ANCHORING SYSTEM MUST BE INSTALLED IN ACCORDANCE WITH THE MANUFACTURER’S INSTALLATION INSTRUCTIONS.
4. STORM COVERING ANCHORS SPACING TO BE DETERMINED IN ACCORDANCE WITH CHART #1, SHEET 2, TO MEET REQUIRED DESIGN PRESSURE AT INSTALLATION SITE.
5. FENESTRATION SYSTEM MUST MEET THE REQUIRED DESIGN PRESSURE OF THE INSTALLATION SITE.
6. SELECTION OF FENESTRATION AND PROTECTIVE SYSTEMS IS THE RESPONSIBILITY OF THE ARCHITECT OR ENGINEER OF RECORD.
7. FABRIC MATERIAL: HIGH TENACITY POLYPROPYLENE 0.050” THICK.

SIGNED: 01/30/2023

TABLE OF CONTENTS	
SHEET NO.	DESCRIPTION
1	NOTES
2 – 4	ELEVATIONS AND CHARTS
5 – 10	INSTALLATION DETAILS
11	COMPONENTS AND INSTALLATION DETAILS

THE MUHLER COMPANY
630 SKYLARK DRIVE SUITE U
CHARLESTON , SC 29407

MUHLER STORM COVERING
LARGE AND SMALL MISSILE IMPACT
NOTES

DRAWN:
A.R.

DWG NO.
08-03361

REV
D

SCALE NTS

DATE 11/06/18

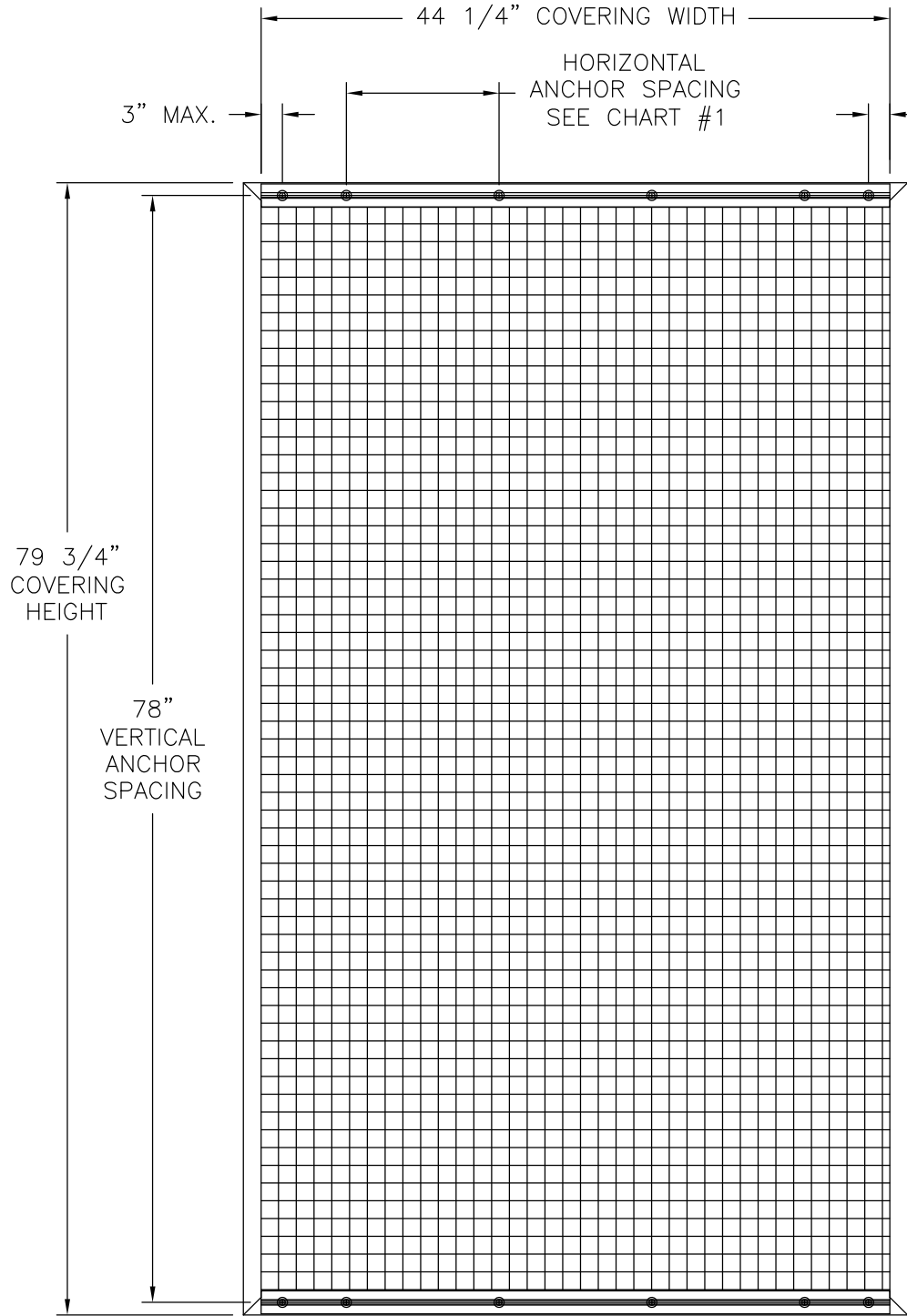
SHEET 1 OF 11

L. ROBERTO LOMAS P.E.
400 S. PALM AVE, INDIALANTIC, FL 32903
434-688-0609 rllomas@lrlomaspe.com



Luis R. Lomas P.E.
SC No.: 24958

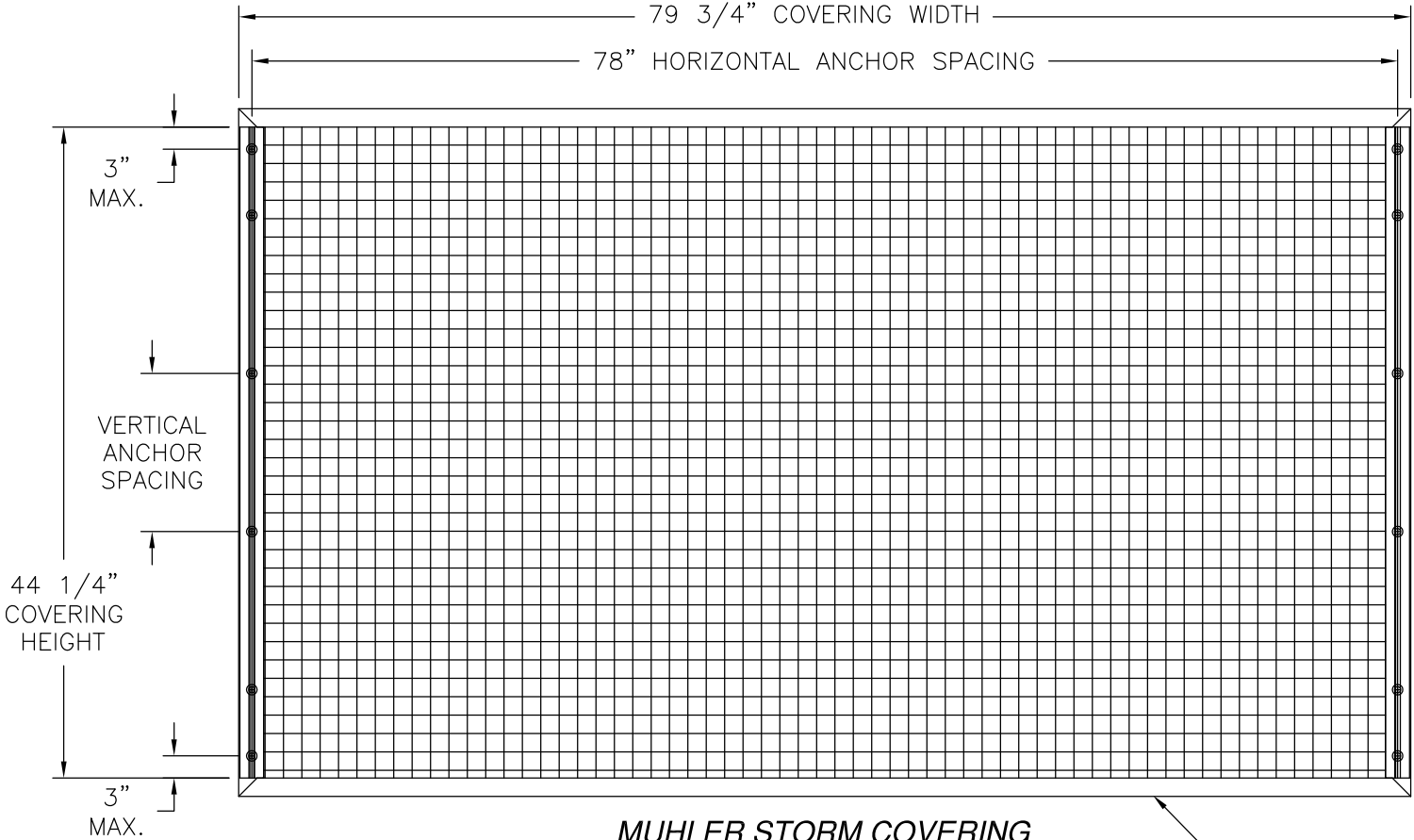
REVISIONS			
REV	DESCRIPTION	DATE	APPROVED
D	REVISED PER NEW CODE	01/30/2023	R.L.



MUHLER STORM COVERING
VERTICAL INSTALLATION
REFER TO SHEET 4 FOR MULTIPLE UNIT PROTECTION

DESIGN PRESSURE RATING	IMPACT RATING
±50.0PSF	LARGE AND SMALL MISSILE IMPACT

MISSILE LEVEL D, WIND ZONE 3
44 1/4" X 81" FABRIC PANEL SHOWN, UNLIMITED WIDTH IS APPROVED AS LONG ANCHOR VERTICAL AND HORIZONTAL SPACING IS IN ACCORDANCE WITH CHART #1



MUHLER STORM COVERING
HORIZONTAL INSTALLATION
REFER TO SHEET 4 FOR MULTIPLE UNIT PROTECTION

DESIGN PRESSURE RATING	IMPACT RATING
±50.0PSF	LARGE AND SMALL MISSILE IMPACT

MISSILE LEVEL D, WIND ZONE 3
81" X 44 1/4" FABRIC PANEL SHOWN, UNLIMITED HEIGHT IS APPROVED AS LONG ANCHOR VERTICAL AND HORIZONTAL SPACING IS IN ACCORDANCE WITH CHART #2

FENESTRATION SYSTEM
AND/OR TRIM
BY OTHERS

SIGNED: 01/30/2023

THE MUHLER COMPANY
630 SKYLARK DRIVE SUITE U
CHARLESTON , SC 29407

MUHLER STORM COVERING
LARGE AND SMALL MISSILE IMPACT
ELEVATIONS

DRAWN: A.R.	DWG NO. 08-03361	REV D
SCALE NTS	DATE 11/06/18	SHEET 2 OF 11

L. ROBERTO LOMAS P.E.
400 S. PALM AVE, INDIALANTIC, FL 32903
434-688-0609 rllomas@lrlomaspe.com



Luis R. Lomas P.E.
SC No.: 24958

REVISIONS			
REV	DESCRIPTION	DATE	APPROVED
D	REVISED PER NEW CODE	01/30/2023	R.L.

Chart #1
Design pressure chart (psf)

Horizontal anchor space (in)	Vertical anchor spacing (in)																												
	24.0	30.0	36.0	42.0	48.0	54.0	60.0	66.0	72.0	78.0	84.0	90.0	96.0	102.0	108.0	114.0	120.0	126.0	132.0	138.0	144.0	150.0	156.0	162.0	168.0	174.0	180.0	186.0	192.0
3.0	50.0	50.0	50.0	50.0	50.0	50.0	50.0	50.0	50.0	50.0	50.0	50.0	50.0	50.0	50.0	50.0	50.0	50.0	50.0	50.0	50.0	50.0	50.0	50.0	50.0	50.0	50.0	50.0	50.0
4.0	50.0	50.0	50.0	50.0	50.0	50.0	50.0	50.0	50.0	50.0	50.0	50.0	50.0	50.0	50.0	50.0	50.0	50.0	50.0	50.0	50.0	50.0	50.0	50.0	50.0	50.0	50.0	50.0	50.0
8.0	50.0	50.0	50.0	50.0	50.0	50.0	50.0	50.0	50.0	50.0	50.0	50.0	50.0	50.0	50.0	50.0	48.8	46.4	44.3	42.4	40.6	39.0	37.5	36.1	34.8	33.6	32.5	31.5	30.5
12.0	50.0	50.0	50.0	50.0	50.0	50.0	50.0	50.0	50.0	50.0	46.4	43.3	40.6	38.2	36.1	34.2	32.5	31.0	29.5	28.3	27.1	26.0	25.0	24.1	23.2	22.4	21.7	21.0	20.3
16.0	50.0	50.0	50.0	50.0	50.0	50.0	48.8	44.3	40.6	37.5	34.8	32.5	30.5	28.7	27.1	25.7	24.4	23.2	22.2	21.2	20.3	19.5	18.8	18.1	17.4	16.8	16.3	15.7	15.2
20.0	50.0	50.0	50.0	50.0	48.8	43.3	39.0	35.5	32.5	30.0	27.9	26.0	24.4	22.9	21.7	20.5	19.5	18.6	17.7	17.0	16.3	15.6	15.0	-	-	-	-	-	-
24.0	50.0	50.0	50.0	46.4	40.6	36.1	32.5	29.5	27.1	25.0	23.2	21.7	20.3	19.1	18.1	17.1	16.3	15.5	-	-	-	-	-	-	-	-	-	-	-

Design pressures are positive and negative

Chart #2
Design pressure chart (psf)

Vertical anchor space (in)	Horizontal anchor spacing (in)																												
	24.0	30.0	36.0	42.0	48.0	54.0	60.0	66.0	72.0	78.0	84.0	90.0	96.0	102.0	108.0	114.0	120.0	126.0	132.0	138.0	144.0	150.0	156.0	162.0	168.0	174.0	180.0	186.0	192.0
3.0	50.0	50.0	50.0	50.0	50.0	50.0	50.0	50.0	50.0	50.0	50.0	50.0	50.0	50.0	50.0	50.0	50.0	50.0	50.0	50.0	50.0	50.0	50.0	50.0	50.0	50.0	50.0	50.0	50.0
4.0	50.0	50.0	50.0	50.0	50.0	50.0	50.0	50.0	50.0	50.0	50.0	50.0	50.0	50.0	50.0	50.0	50.0	50.0	50.0	50.0	50.0	50.0	50.0	50.0	50.0	50.0	50.0	50.0	50.0
8.0	50.0	50.0	50.0	50.0	50.0	50.0	50.0	50.0	50.0	50.0	50.0	50.0	50.0	50.0	50.0	50.0	48.8	46.4	44.3	42.4	40.6	39.0	37.5	36.1	34.8	33.6	32.5	31.5	30.5
12.0	50.0	50.0	50.0	50.0	50.0	50.0	50.0	50.0	50.0	50.0	46.4	43.3	40.6	38.2	36.1	34.2	32.5	31.0	29.5	28.3	27.1	26.0	25.0	24.1	23.2	22.4	21.7	21.0	20.3
16.0	50.0	50.0	50.0	50.0	50.0	50.0	48.8	44.3	40.6	37.5	34.8	32.5	30.5	28.7	27.1	25.7	24.4	23.2	22.2	21.2	20.3	19.5	18.8	18.1	17.4	16.8	16.3	15.7	15.2
20.0	50.0	50.0	50.0	50.0	48.8	43.3	39.0	35.5	32.5	30.0	27.9	26.0	24.4	22.9	21.7	20.5	19.5	18.6	17.7	17.0	16.3	15.6	15.0	-	-	-	-	-	-
24.0	50.0	50.0	50.0	46.4	40.6	36.1	32.5	29.5	27.1	25.0	23.2	21.7	20.3	19.1	18.1	17.1	16.3	15.5	-	-	-	-	-	-	-	-	-	-	-

Design pressures are positive and negative

SIGNED: 01/30/2023

THE MUHLER COMPANY
630 SKYLARK DRIVE SUITE U
CHARLESTON , SC 29407

MUHLER STORM COVERING
LARGE AND SMALL MISSILE IMPACT
CHARTS

DRAWN:
A.R.

DWG NO.
08-03361


REV
D

SCALE
NTS

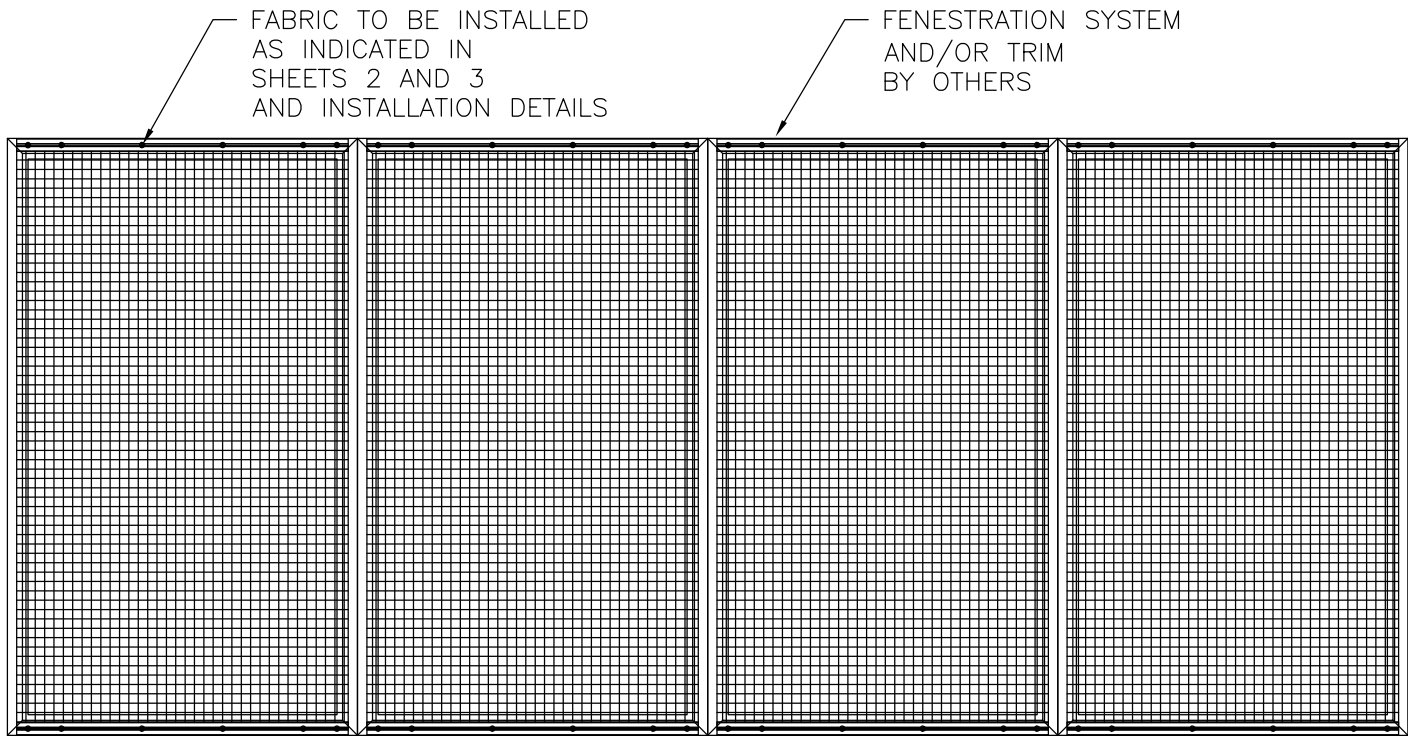
DATE
11/06/18

SHEET
3 OF 11

L. ROBERTO LOMAS P.E.
400 S. PALM AVE, INDIALANTIC, FL 32903
434-688-0609 rllomas@rlomaspe.com

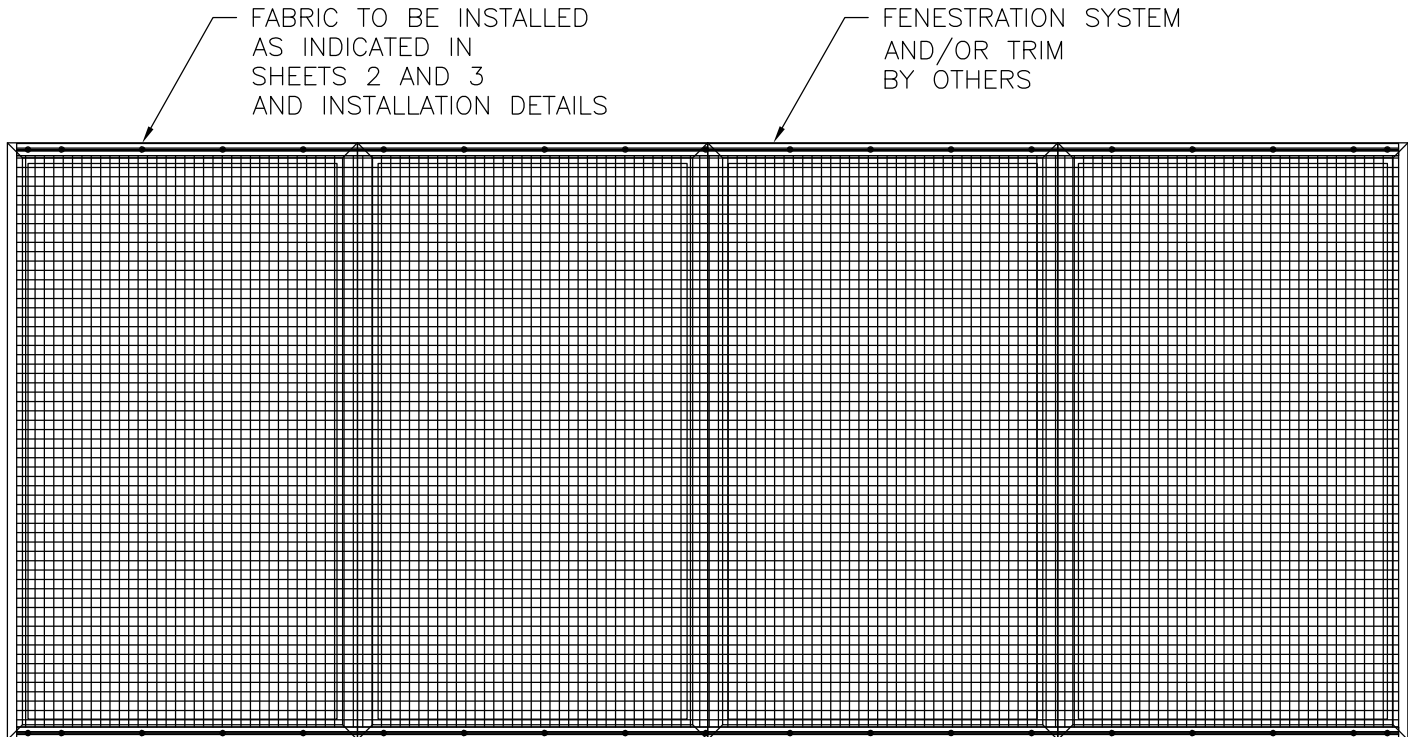


Luis R. Lomas P.E.
SC No.: 24958



MUHLER STORM COVERING

4 UNITS SHOWN, UNLIMITED NUMBER OF UNITS ARE QUALIFIED
AS LONG AS EACH INDIVIDUAL UNIT IS PROTECTED AS SHOWN
AND FABRIC IS INSTALLED AS SHOWN IN SHEETS 2 AND 3 AND INSTALLATION DETAILS
VERTICAL INSTALLATION SHOWN, HORIZONTAL SIMILAR



MUHLER STORM COVERING

4 UNITS SHOWN, UNLIMITED NUMBER OF UNITS ARE QUALIFIED
AS LONG AS ENTIRE UNIT IS PROTECTED AS SHOWN
AND FABRIC IS INSTALLED AS SHOWN IN SHEETS 2 AND 3 AND INSTALLATION DETAILS
VERTICAL INSTALLATION SHOWN, HORIZONTAL SIMILAR

REVISIONS			
REV	DESCRIPTION	DATE	APPROVED
D	REVISED PER NEW CODE	01/30/2023	R.L.

SIGNED: 01/30/2023

THE MUHLER COMPANY
630 SKYLARK DRIVE SUITE U
CHARLESTON , SC 29407

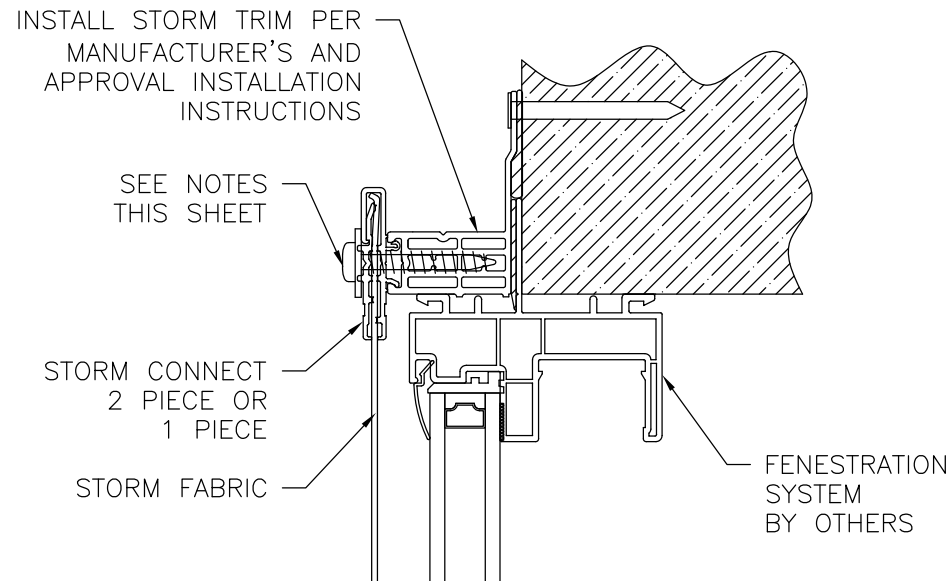
MUHLER STORM COVERING
LARGE AND SMALL MISSILE IMPACT
MULTIPLE INSTALLATION ELEVATION

DRAWN: A.R.	DWG NO. 08-03361	REV D
SCALE NTS	DATE 11/06/18	SHEET 4 OF 11

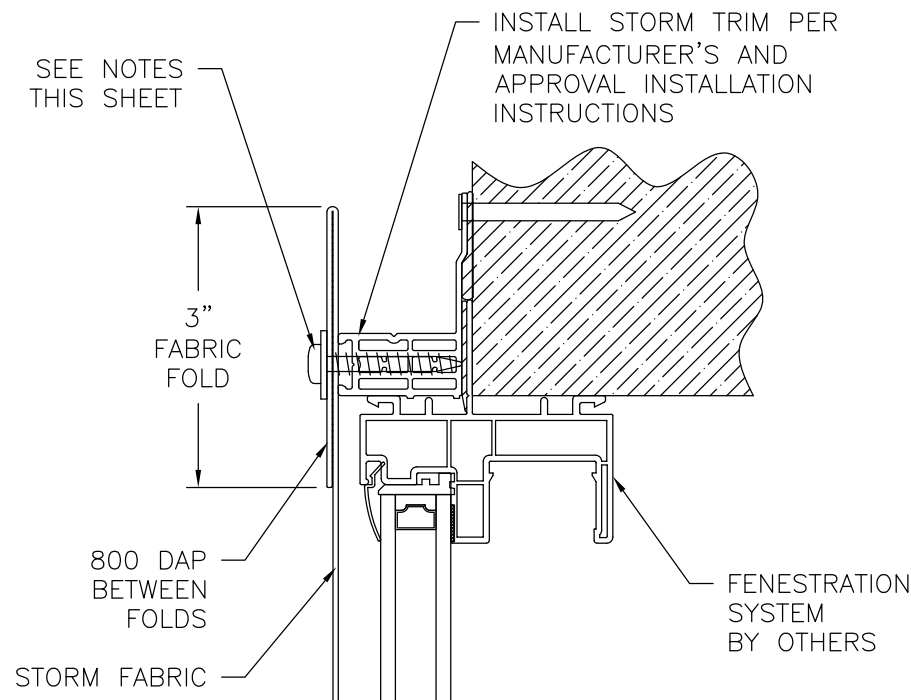
L. ROBERTO LOMAS P.E.
400 S. PALM AVE, INDIALANTIC, FL 32903
434-688-0609 rllomas@lrlomaspe.com

Luis R. Lomas P.E.
SC No.: 24958

REVISIONS			
REV	DESCRIPTION	DATE	APPROVED
D	REVISED PER NEW CODE	01/30/2023	R.L.

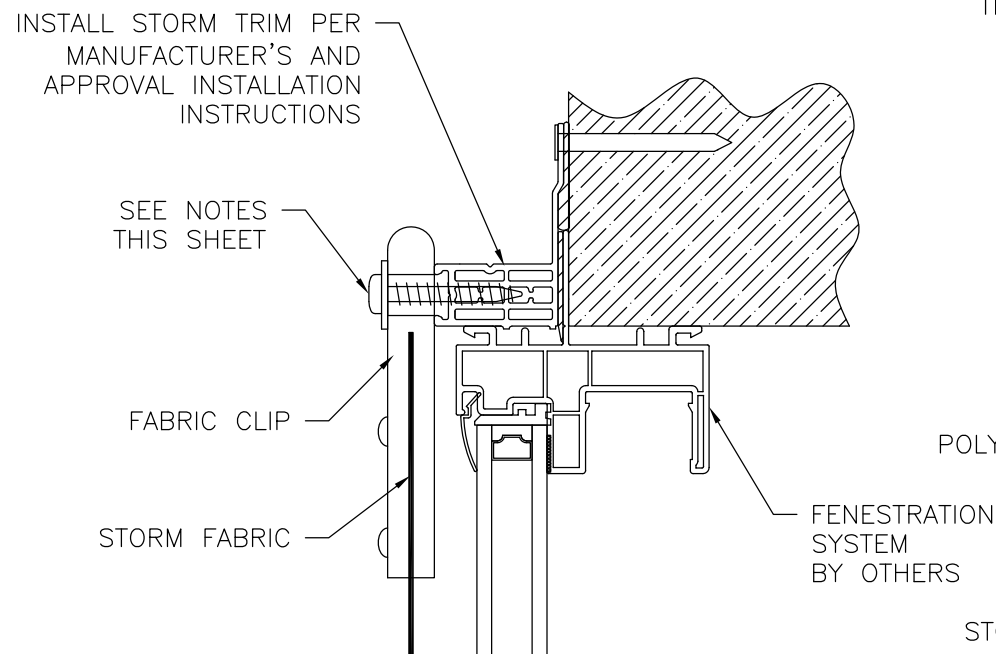


FABRIC INSTALLATION
WITH STORM CONNECT SYSTEM

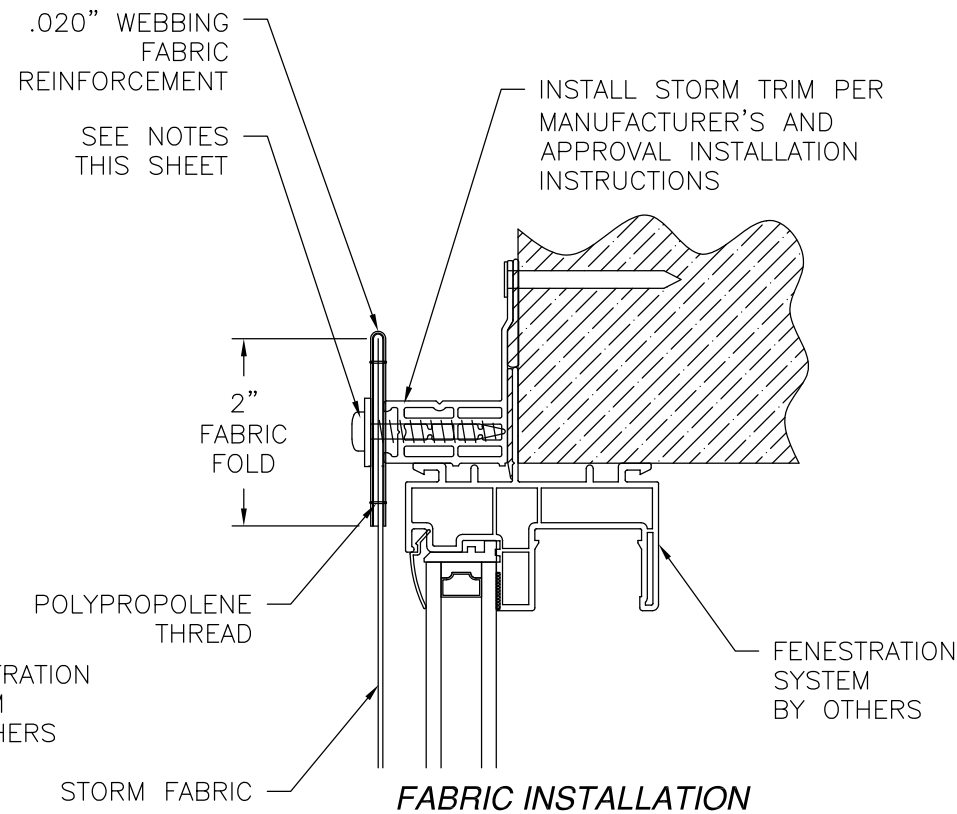


FABRIC INSTALLATION
WITH FABRIC FOLDING

- NOTES:**
ANCHORS QUALIFIED TO BE USED:
1. M6-265 X 1 7/16"
TORX T-25 PH
SCREW WITH FLAT WASHER
 2. HILMAN MULTIMATERIAL SCREW
HEX/TORX HEAD 1/4" X 1 1/4" WITH 1" WASHER
 3. #10 X 1 1/2" PTH VINYL HOLD SCREW
WITH 1" WASHER.



FABRIC INSTALLATION
WITH FABRIC CLIP



FABRIC INSTALLATION
WITH FABRIC FOLDING REINFORCEMENT

SIGNED: 01/30/2023

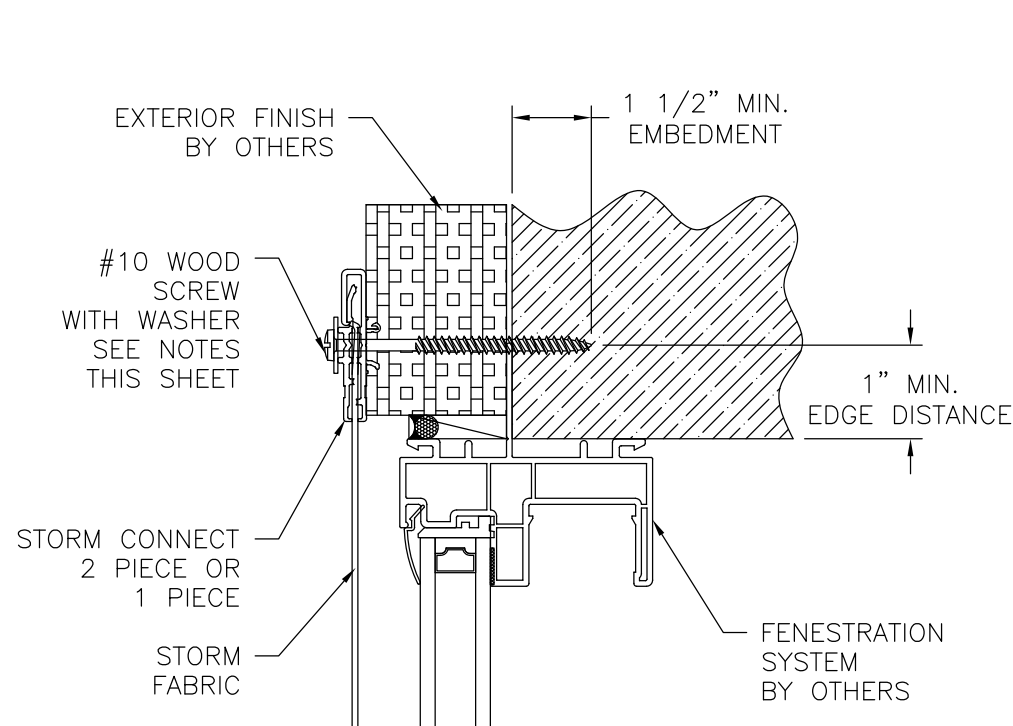
THE MUHLER COMPANY
630 SKYLARK DRIVE SUITE U
CHARLESTON , SC 29407

MUHLER STORM COVERING
LARGE AND SMALL MISSILE IMPACT
INSTALLATION DETAILS

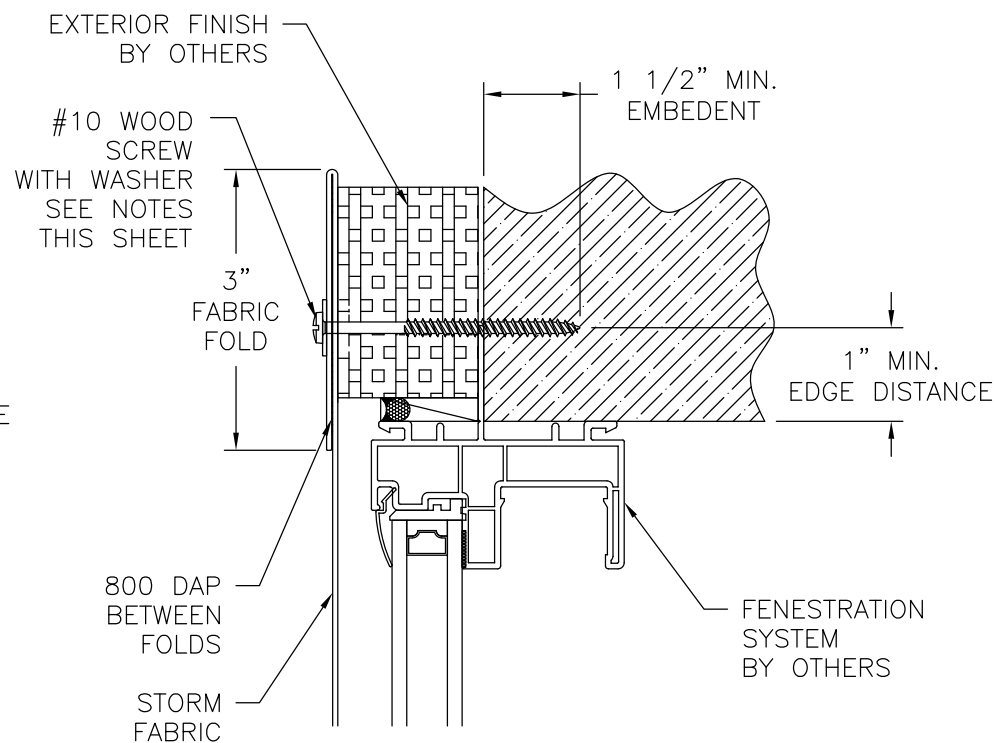
DRAWN: A.R.	DWG NO. 08-03361	REV D
SCALE NTS	DATE 11/06/18	SHEET 5 OF 11
L. ROBERTO LOMAS P.E. 400 S. PALM AVE, INDIALANTIC, FL 32903 434-688-0609 rllomas@lrlomaspe.com		



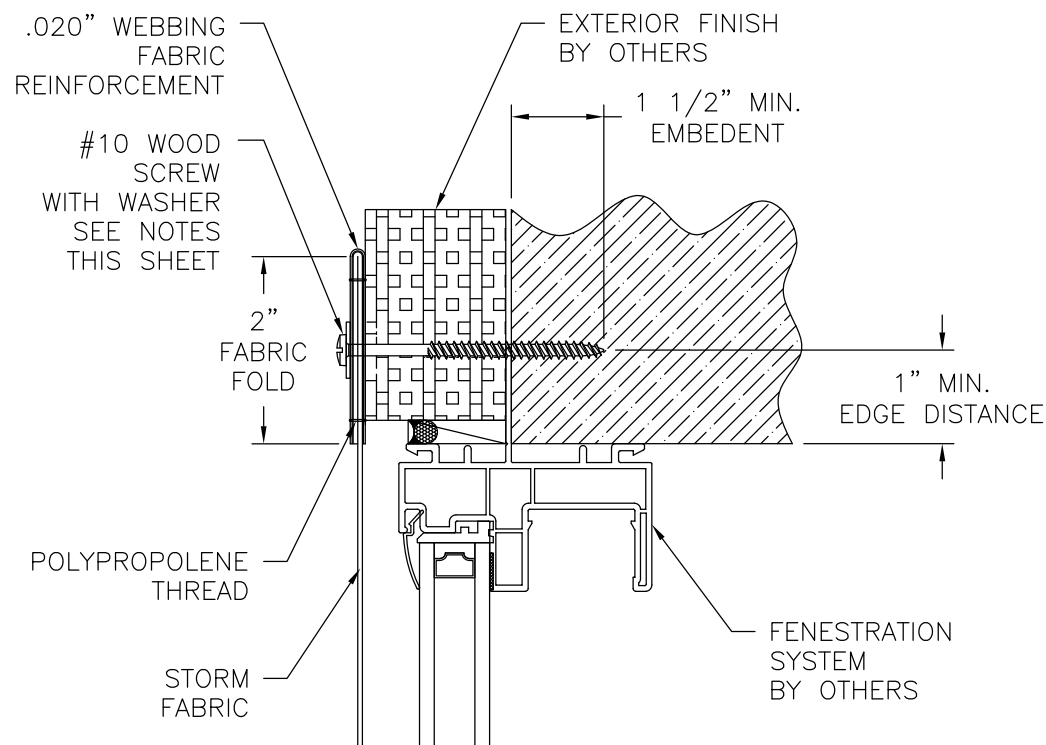
Luis R. Lomas P.E.
SC No.: 24958



FABRIC INSTALLATION
WITH STORM CONNECT SYSTEM W/WOOD SCREW



FABRIC INSTALLATION
WITH FABRIC FOLDING W/WOOD SCREW



FABRIC INSTALLATION
WITH FABRIC FOLDING REINFORCEMENT W/WOOD SCREW

REVISIONS			
REV	DESCRIPTION	DATE	APPROVED
D	REVISED PER NEW CODE	01/30/2023	R.L.

NOTES:
ANCHORS QUALIFIED TO BE USED:
 1. #10 WOOD SCREW WITH WASHER WITH SUFFICIENT LENGTH TO ACHIEVE A 1 1/2" MINIMUM EMBEDMENT INTO SUBSTRATE.

SIGNED: 01/30/2023

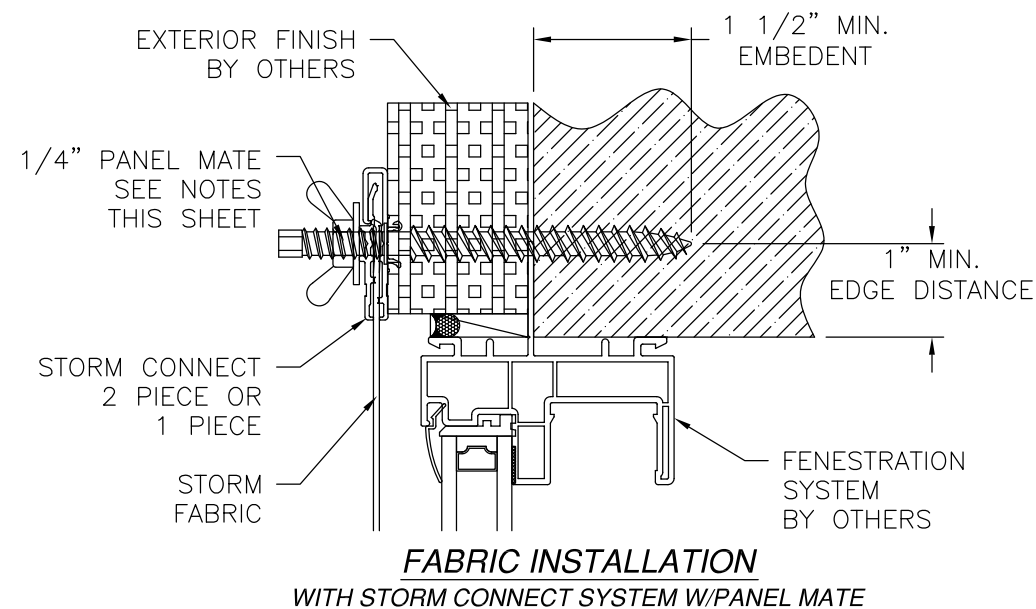
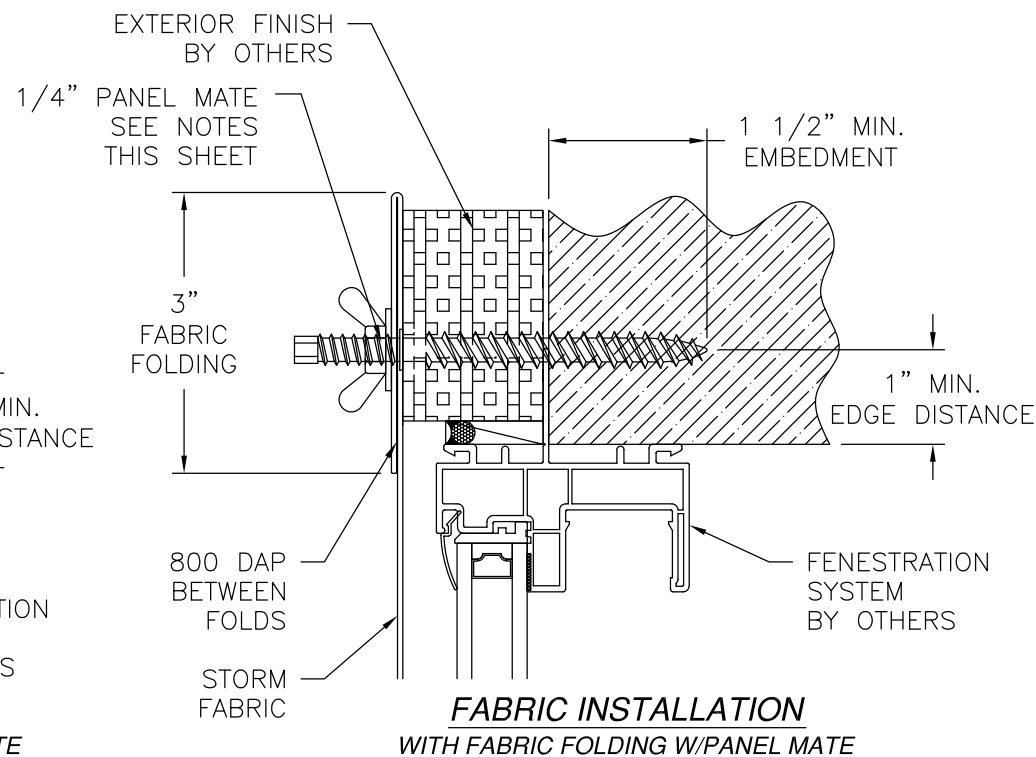
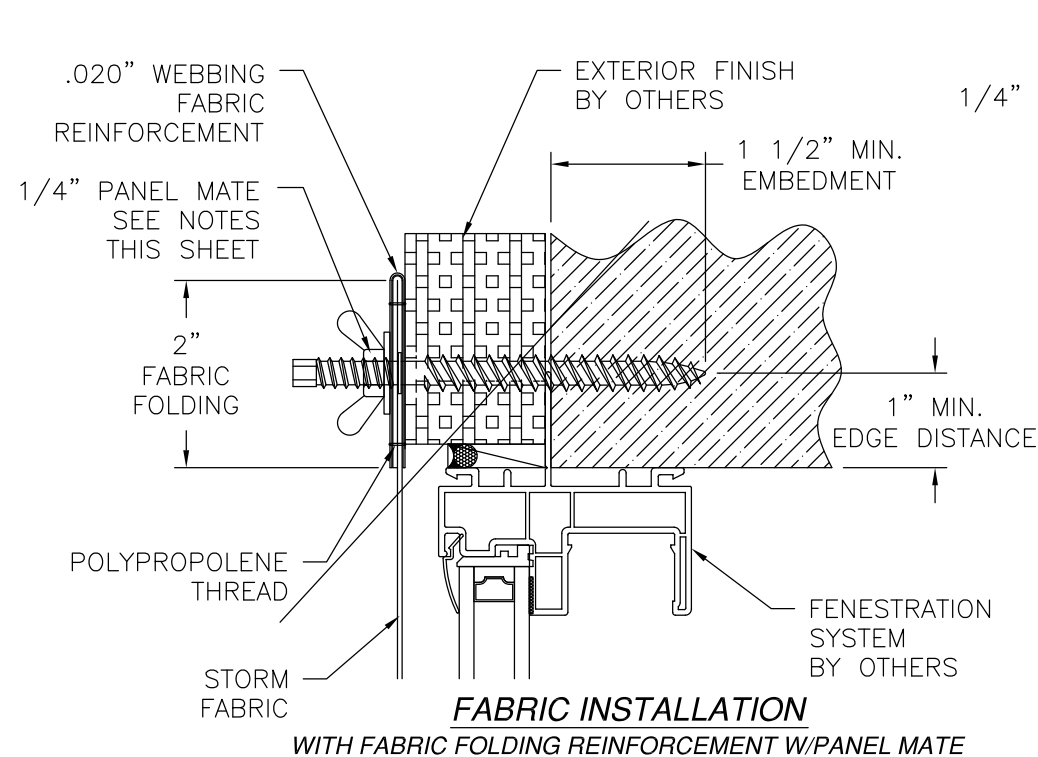
THE MUHLER COMPANY
 630 SKYLARK DRIVE SUITE U
 CHARLESTON , SC 29407

MUHLER STORM COVERING
 LARGE AND SMALL MISSILE IMPACT
 INSTALLATION DETAILS

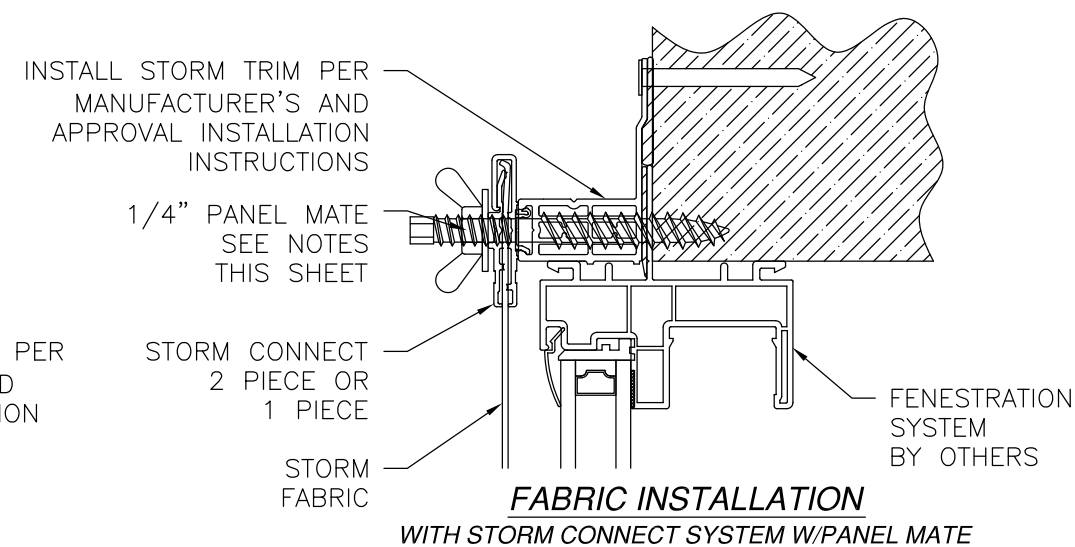
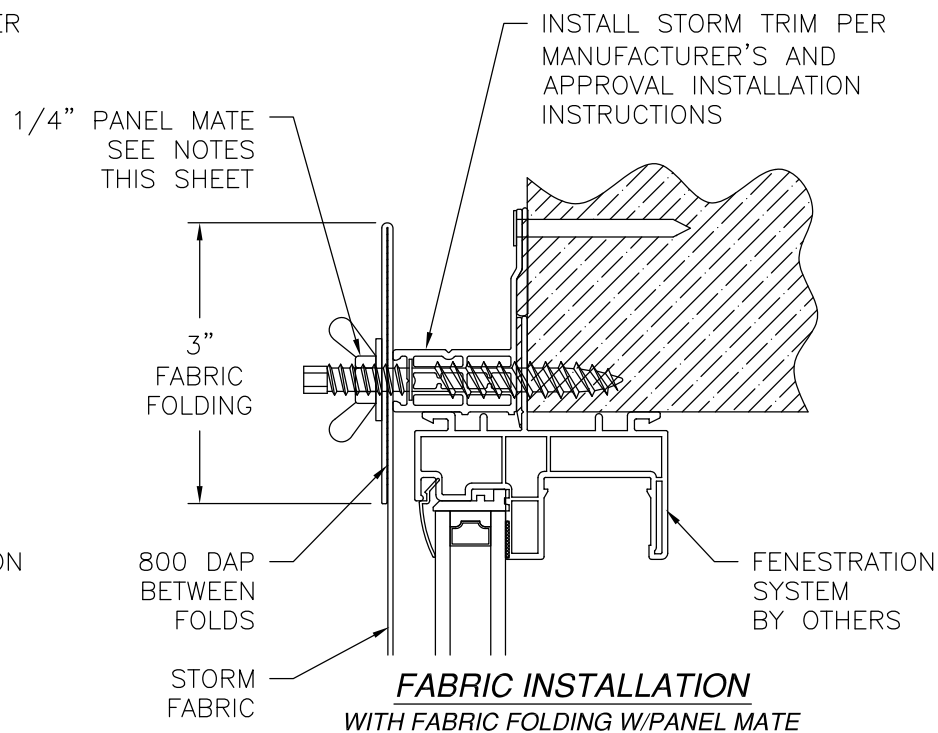
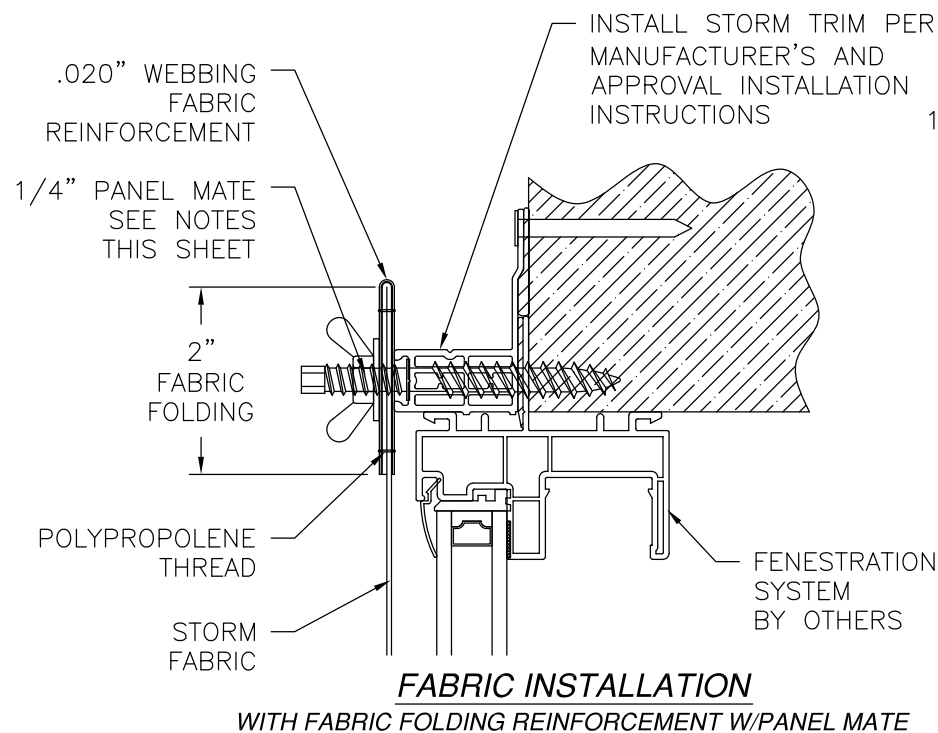
DRAWN: A.R.	DWG NO. 08-03361	REV D
SCALE NTS	DATE 11/06/18	SHEET 6 OF 11
L. ROBERTO LOMAS P.E. 400 S. PALM AVE, INDIALANTIC, FL 32903 434-688-0609 rllomas@lrlomaspe.com		



Luis R. Lomas P.E.
 SC No.: 24958



NOTES:
ANCHORS QUALIFIED TO BE USED:
1. 1/4" PANEL MATE WITH SUFFICIENT LENGTH TO ACHIEVE A 1 1/2" MINIMUM EMBEDMENT INTO SUBSTRATE.



REVISIONS			
REV	DESCRIPTION	DATE	APPROVED
D	REVISED PER NEW CODE	01/30/2023	R.L.

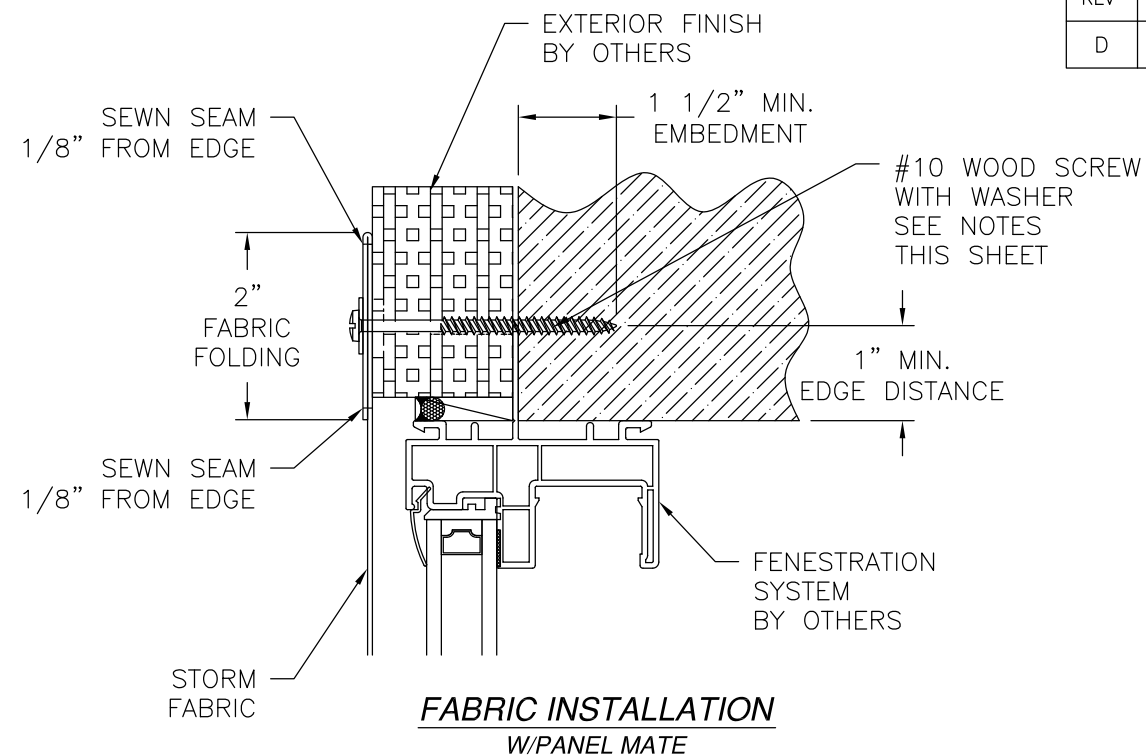
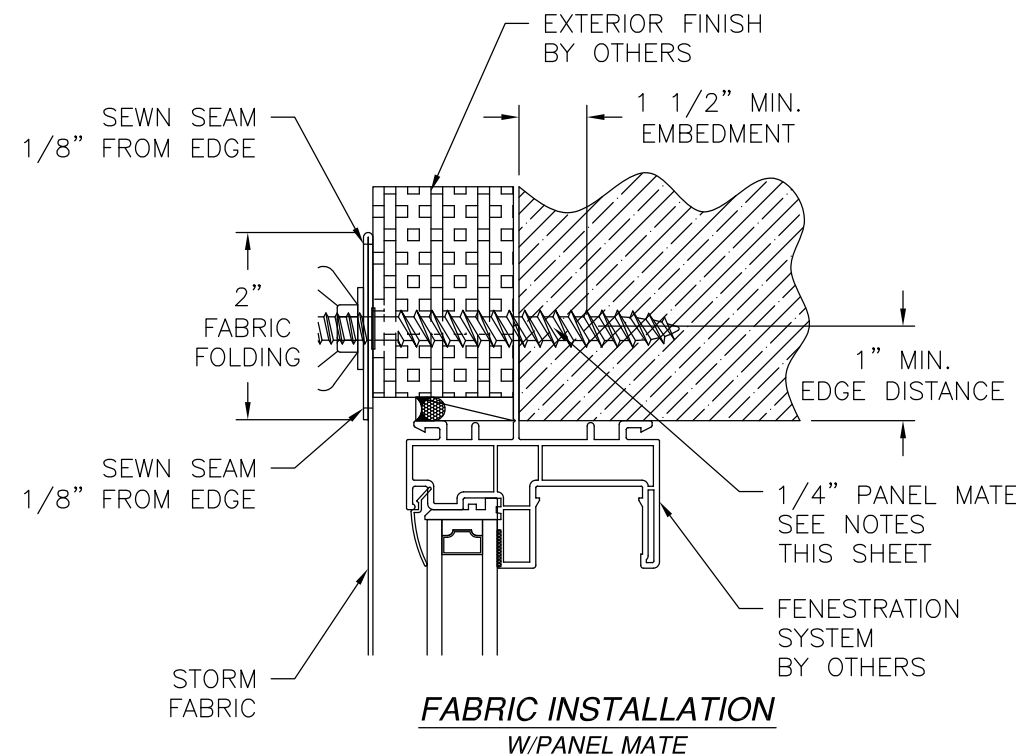
THE MUHLER COMPANY 630 SKYLARK DRIVE SUITE U CHARLESTON , SC 29407		
MUHLER STORM COVERING LARGE AND SMALL MISSILE IMPACT INSTALLATION DETAILS		
DRAWN: A.R.	DWG NO. 08-03361	REV D
SCALE NTS	DATE 11/06/18	SHEET 7 OF 11
L. ROBERTO LOMAS P.E. 400 S. PALM AVE, INDIALANTIC, FL 32903 434-688-0609 rllomas@rlomaspe.com		

SIGNED: 01/30/2023

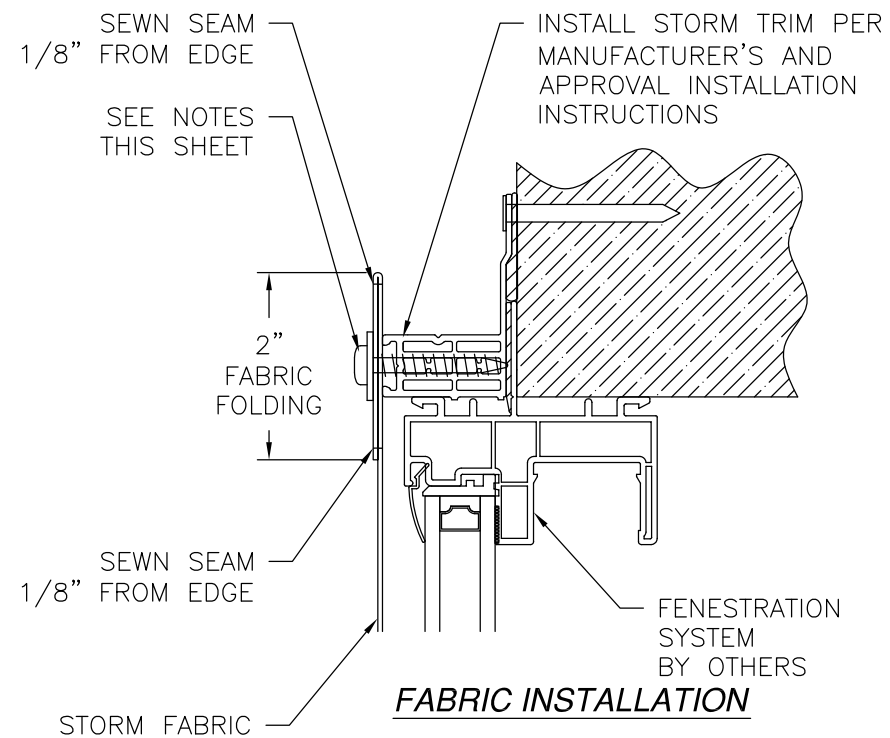
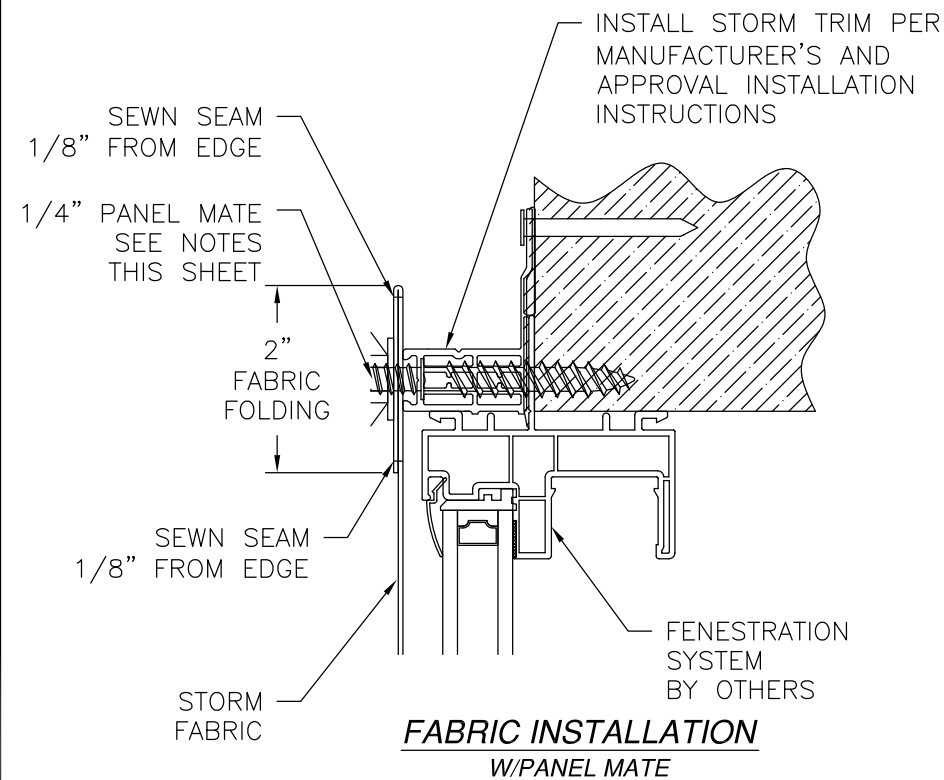


Luis R. Lomas P.E.
SC No.: 24958

REVISIONS			
REV	DESCRIPTION	DATE	APPROVED
D	REVISED PER NEW CODE	01/30/2023	R.L.



- NOTES:**
ANCHORS QUALIFIED TO BE USED:
- M6-265 X 1 7/16" TORX T-25 PH SCREW WITH FLAT WASHER
 - HILMAN MULTIMATERIAL SCREW HEX/TORX HEAD 1/4" X 1 1/4" WITH 1" WASHER
 - #10 X 1 1/2" PTH VINYL HOLD SCREW WITH 1" WASHER
 - 1/4" PANEL MATE WITH SUFFICIENT LENGTH TO ACHIEVE A 1 1/2" MINIMUM EMBEDMENT INTO SUBSTRATE.
 - #10 WOOD SCREW WITH WASHER WITH SUFFICIENT LENGTH TO ACHIEVE A 1 1/2" MINIMUM EMBEDMENT INTO SUBSTRATE.



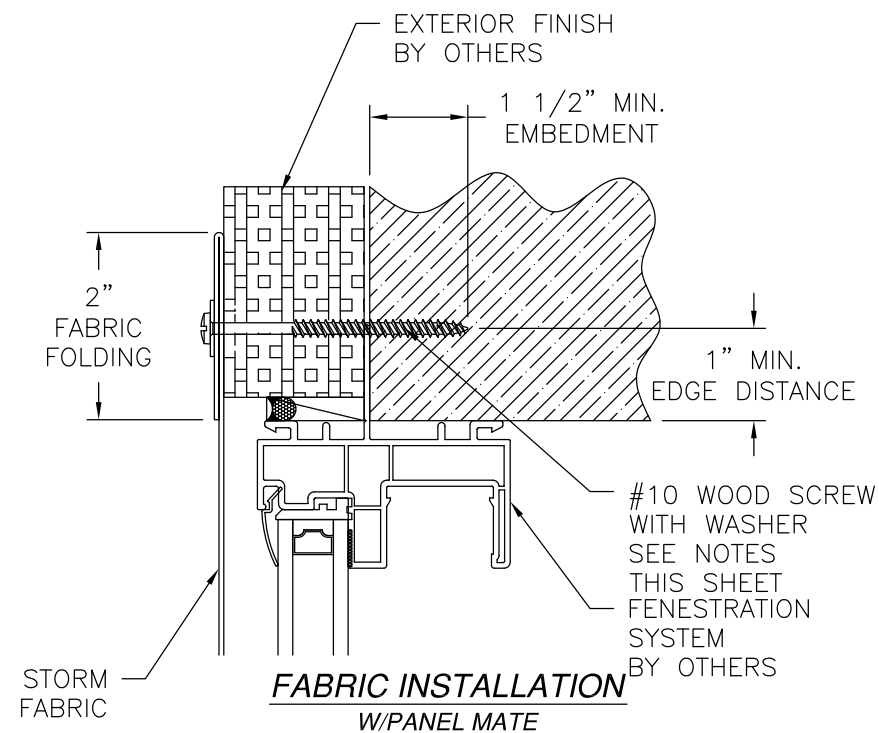
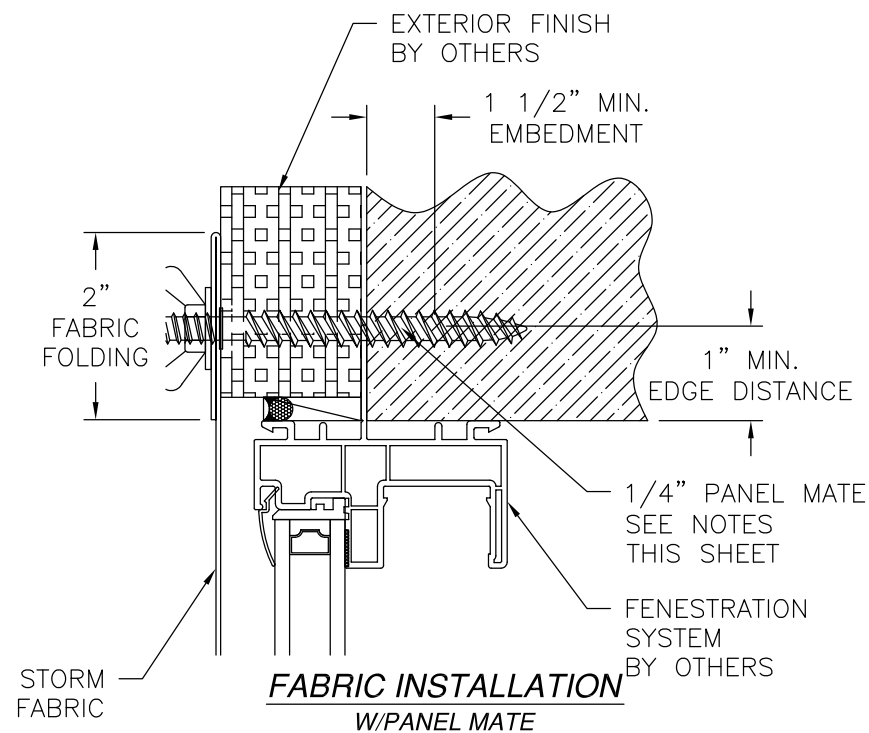
SIGNED: 01/30/2023

THE MUHLER COMPANY 630 SKYLARK DRIVE SUITE U CHARLESTON , SC 29407		
MUHLER STORM COVERING LARGE AND SMALL MISSILE IMPACT INSTALLATION DETAILS		
DRAWN: A.R.	DWG NO. 08-03361	REV D
SCALE NTS	DATE 11/06/18	SHEET 8 OF 11
L. ROBERTO LOMAS P.E. 400 S. PALM AVE, INDIALANTIC, FL 32903 434-688-0609 rllomas@rlomaspe.com		

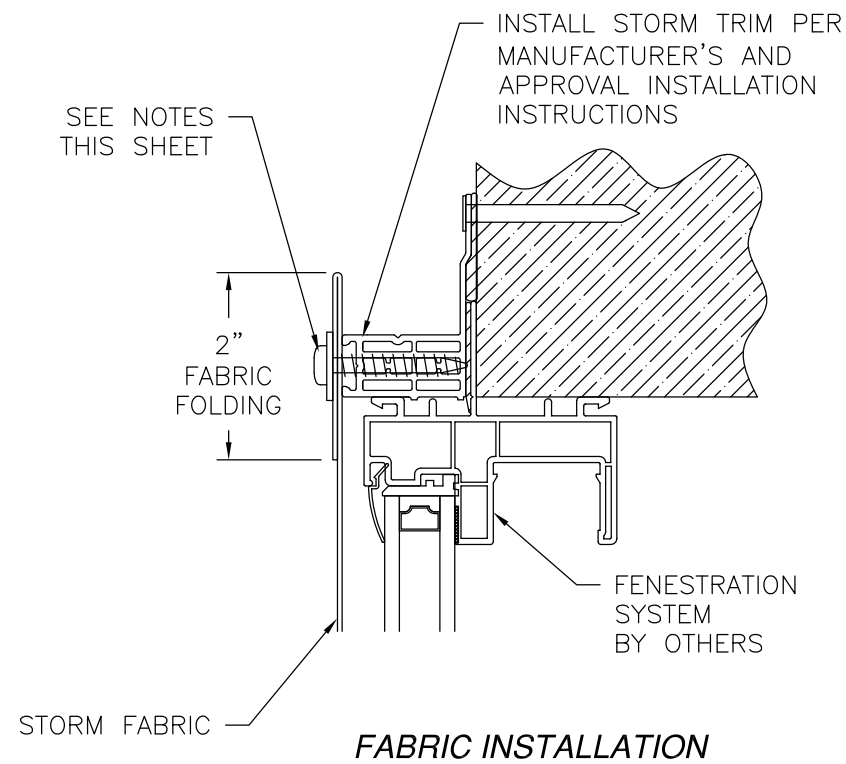
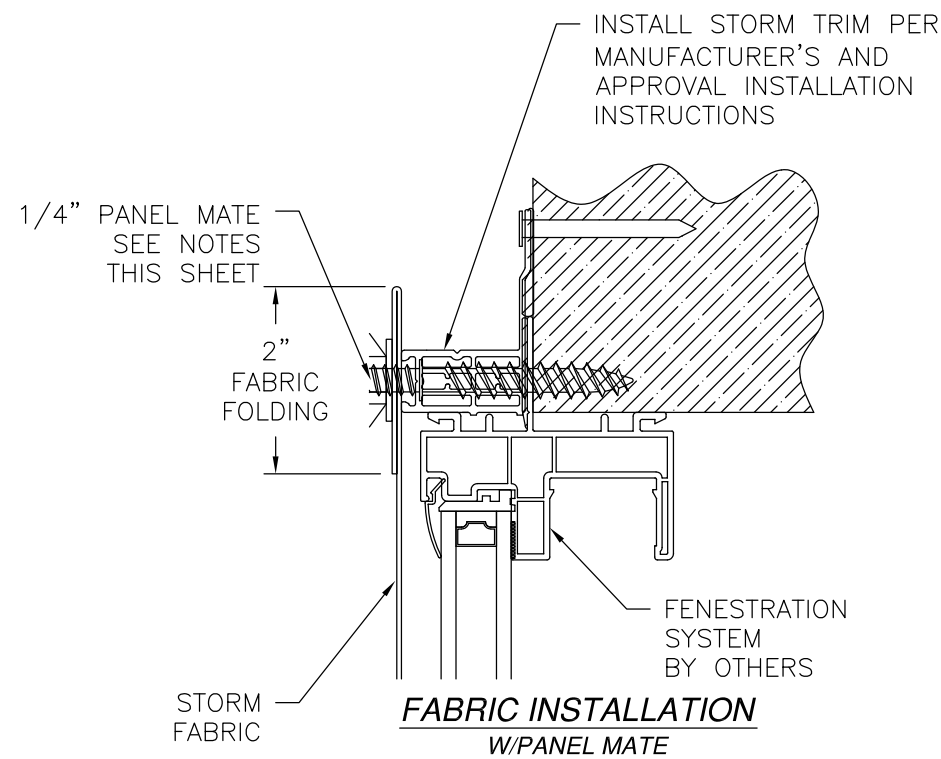


Luis R. Lomas P.E.
SC No.: 24958

REVISIONS			
REV	DESCRIPTION	DATE	APPROVED
D	REVISED PER NEW CODE	01/30/2023	R.L.



- NOTES:**
ANCHORS QUALIFIED TO BE USED:
- M6-265 X 1 7/16" TORX T-25 PH SCREW WITH FLAT WASHER
 - HILMAN MULTIMATERIAL SCREW HEX/TORX HEAD 1/4" X 1 1/4" WITH 1" WASHER
 - #10 X 1 1/2" PTH VINYL HOLD SCREW WITH 1" WASHER
 - 1/4" PANEL MATE WITH SUFFICIENT LENGTH TO ACHIEVE A 1 1/2" MINIMUM EMBEDMENT INTO SUBSTRATE.
 - #10 WOOD SCREW WITH WASHER WITH SUFFICIENT LENGTH TO ACHIEVE A 1 1/2" MINIMUM EMBEDMENT INTO SUBSTRATE.



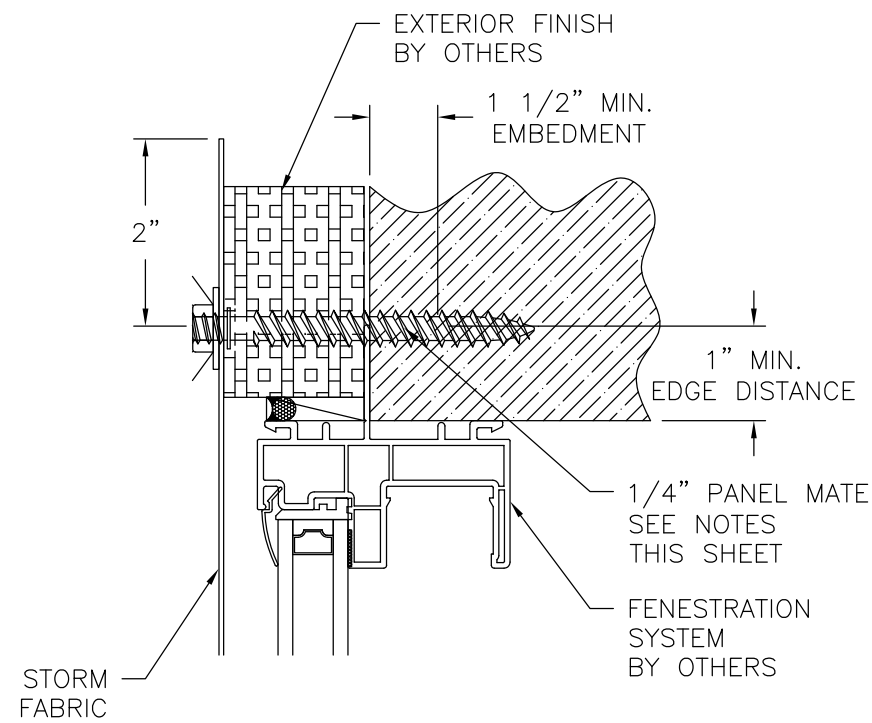
SIGNED: 01/30/2023

THE MUHLER COMPANY 630 SKYLARK DRIVE SUITE U CHARLESTON , SC 29407		
MUHLER STORM COVERING LARGE AND SMALL MISSILE IMPACT INSTALLATION DETAILS		
DRAWN: A.R.	DWG NO. 08-03361	REV D
SCALE NTS	DATE 11/06/18	SHEET 9 OF 11
L. ROBERTO LOMAS P.E. 400 S. PALM AVE, INDIALANTIC, FL 32903 434-688-0609 rllomas@lrlomaspe.com		

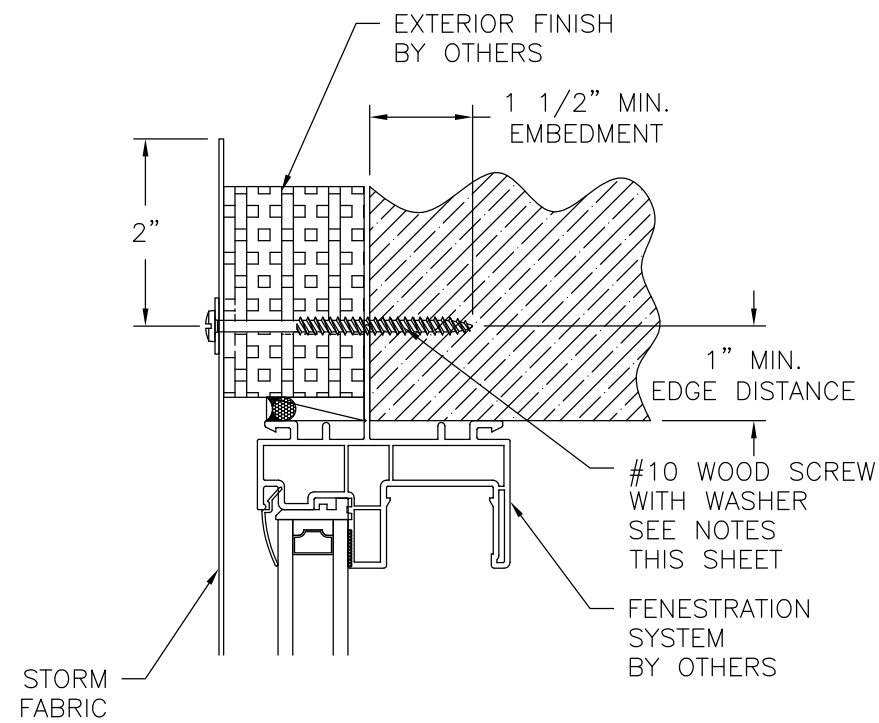


Luis R. Lomas P.E.
SC No.: 24958

REVISIONS			
REV	DESCRIPTION	DATE	APPROVED
D	REVISED PER NEW CODE	01/30/2023	R.L.

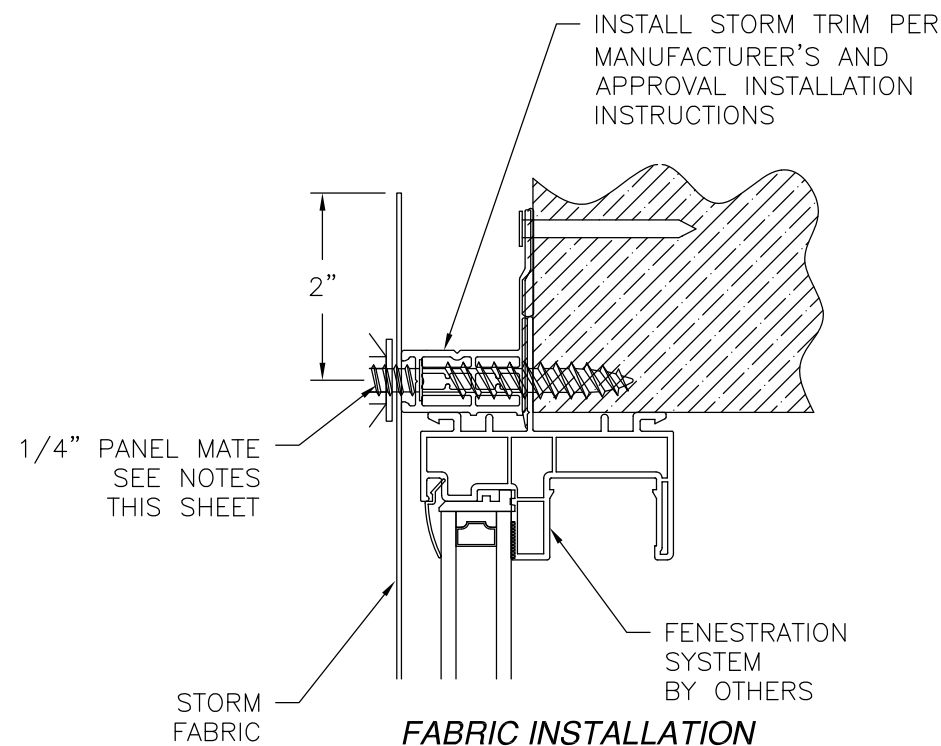


FABRIC INSTALLATION
W/PANEL MATE

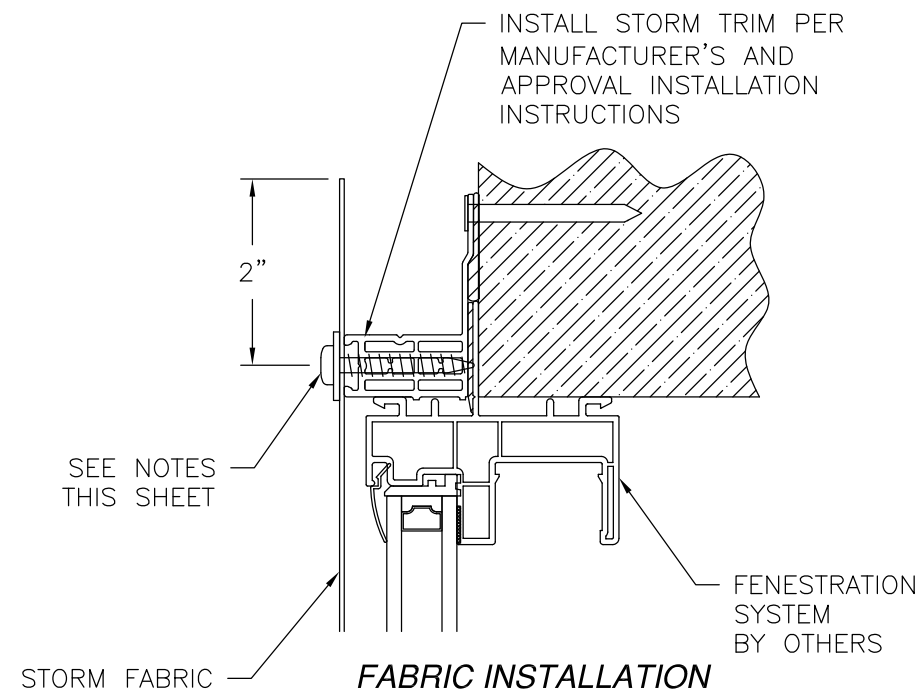


FABRIC INSTALLATION
W/PANEL MATE

- NOTES:**
ANCHORS QUALIFIED TO BE USED:
1. M6-265 X 1 7/16"
TORX T-25 PH
SCREW WITH FLAT WASHER
 2. HILMAN MULTIMATERIAL SCREW
HEX/TORX HEAD 1/4" X 1 1/4" WITH 1" WASHER
 3. #10 X 1 1/2" PTH VINYL HOLD SCREW
WITH 1" WASHER
 4. 1/4" PANEL MATE WITH SUFFICIENT LENGTH TO
ACHIEVE A 1 1/2" MINIMUM EMBEDMENT INTO
SUBSTRATE.
 5. #10 WOOD SCREW WITH WASHER WITH SUFFICIENT
LENGTH TO ACHIEVE A 1 1/2" MINIMUM EMBEDMENT
INTO SUBSTRATE.



FABRIC INSTALLATION
W/PANEL MATE



FABRIC INSTALLATION

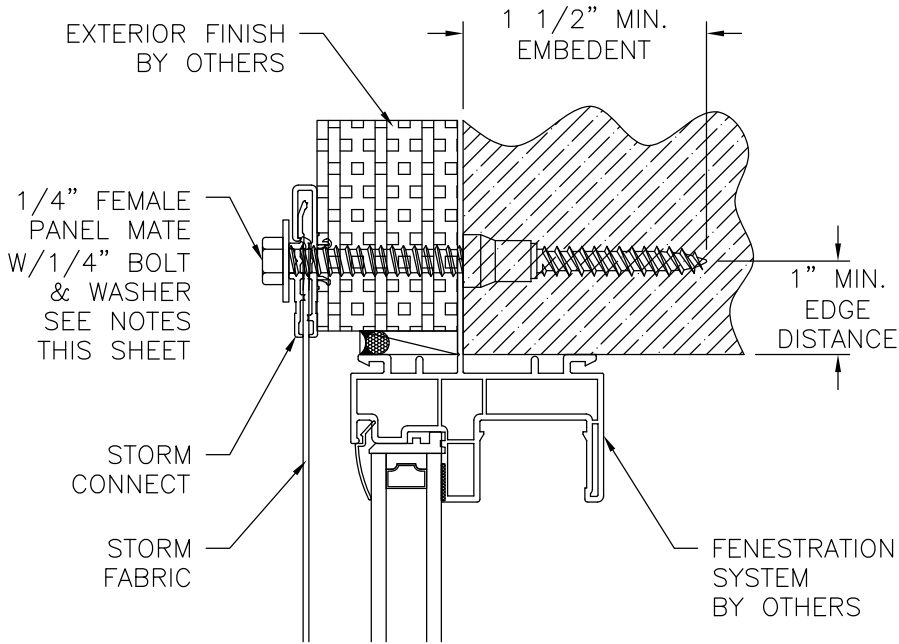
SIGNED: 01/30/2023

THE MUHLER COMPANY 630 SKYLARK DRIVE SUITE U CHARLESTON , SC 29407		
MUHLER STORM COVERING LARGE AND SMALL MISSILE IMPACT INSTALLATION DETAILS		
DRAWN: A.R.	DWG NO. 08-03361	REV D
SCALE NTS	DATE 11/06/18	SHEET 10 OF 11
L. ROBERTO LOMAS P.E. 400 S. PALM AVE, INDIALANTIC, FL 32903 434-688-0609 rllomas@lrlomaspe.com		

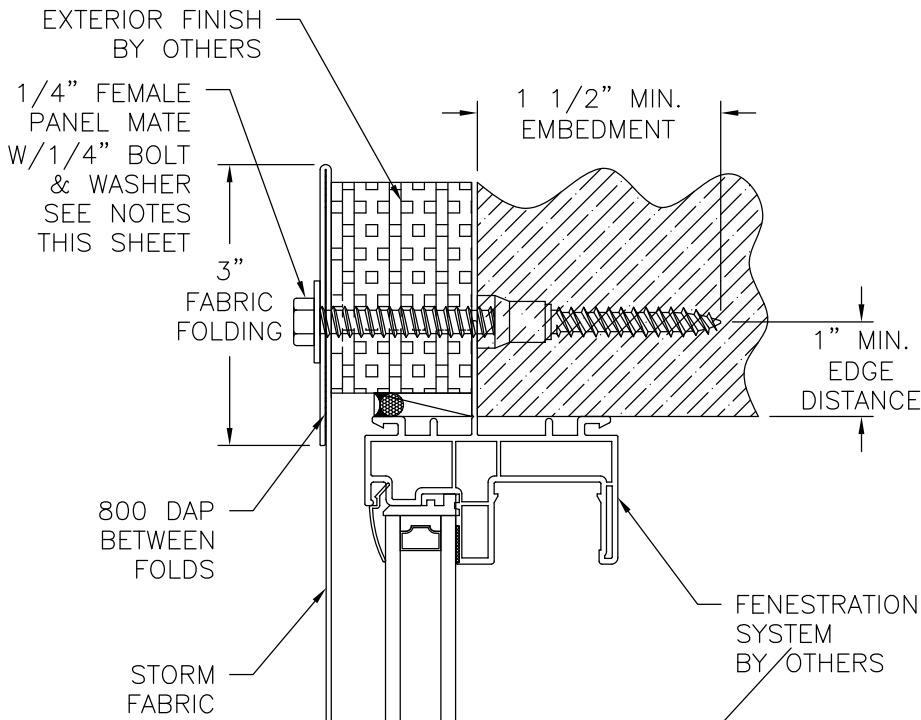


Luis R. Lomas P.E.
SC No.: 24958

REVISIONS			
REV	DESCRIPTION	DATE	APPROVED
D	REVISED PER NEW CODE	01/30/2023	R.L.

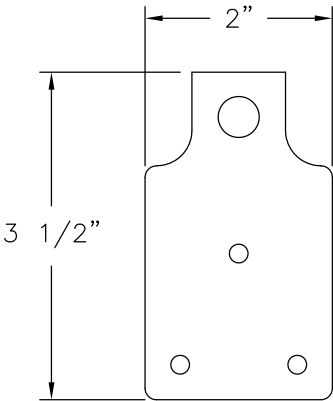


FABRIC INSTALLATION
WITH STORM CONNECT SYSTEM W/PANEL MATE

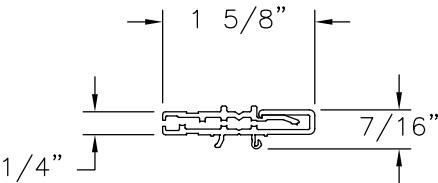


FABRIC INSTALLATION
WITH FABRIC FOLDING W/PANEL MATE

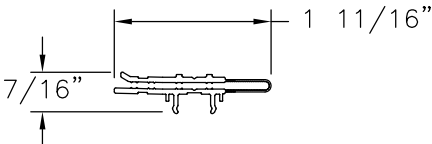
NOTES:
ANCHORS QUALIFIED TO BE USED:
1. 1/4" FEMALE PANEL MATE WITH 1/4" BOLT AND WASHER



FABRIC CLIP
PLASTIC, BY TOWN & COUNTRY



STORM CONNECT 2 PIECE
VINYL, BY MUHLER



STORM CONNECT 1 PIECE
VINYL, BY MUHLER

SIGNED: 01/30/2023

THE MUHLER COMPANY

630 SKYLARK DRIVE SUITE U
CHARLESTON , SC 29407

MUHLER STORM COVERING

LARGE AND SMALL MISSILE IMPACT
COMPONENTS AND INSTALLATION DETAILS

DRAWN:
A.R.

DWG NO.
08-03361

REV
D

SCALE
NTS

DATE
11/06/18

SHEET
11 OF 11

L. ROBERTO LOMAS P.E.

400 S. PALM AVE, INDIALANTIC, FL 32903

434-688-0609 rllomas@lrlomaspe.com



Luis R. Lomas P.E.
SC No.: 24958